



Ellacotts

Chartered Accountants & Business Advisers

Business Newsletter

Banbury +44(0)1295 250401 Birmingham +44(0)1295 250401 Kettering +44(0)1536 646000 London +44(0)2036 937315
email: solutions@ellacotts.co.uk visit: www.ellacotts.co.uk

October 2023

NEW EMPLOYEE CHECKS

HMRC is publicising a new way that employers can be provided with an employee's National Insurance number (NINO).

Apple iPhone users have now been given the functionality to store the NINO in their Apple Wallet: online, or through the HMRC App. This means that new employees may increasingly provide proof of their NINO by using their Apple Wallet, rather than giving the employer the traditional NINO confirmation letter from HMRC.

HMRC is reassuring employers that this makes valid proof, and can be accepted in just the same way that the traditional letter would be. At the moment, it's a service only available to Apple users, but HMRC is working to extend it to Android phone users in due course. It will provide an update when it's made provisions for the NINO to be saved to the Google Wallet.

Employers should check that the employee's name matches what they see in the Apple Wallet. If a record is needed, HMRC advises asking the employee for a screenshot.

It's all part of HMRC's continuing push towards digital service. Issuing confirmation letters by post can take HMRC up to 15 days: on the other hand, HMRC says that using its App to confirm the NINO should only take a matter of minutes. The Personal Tax Account can also be used to view or download, print, save or share a letter showing the NINO.

One widget or two? Covid support payments still on HMRC's radar

With support schemes having lost between £3.3 billion and £7.3 billion to error and fraud, HMRC isn't letting go now.

It's still checking that claims under schemes like the Coronavirus Job Retention Scheme (CJRS or furlough scheme), met all necessary conditions.

Any employers who used the furlough scheme, and have yet to review details of their claim, are advised to make time to do so. If this brings any errors or uncertainties to light, it is best to contact HMRC at once. Repayment of any money received in error will be needed, but it is just as important that HMRC is formally notified that support has been overclaimed. Where errors are disclosed voluntarily (rather than at HMRC prompting), and HMRC is satisfied as to the full cooperation of the taxpayer, it can reduce the amount of any penalty it may seek to charge.

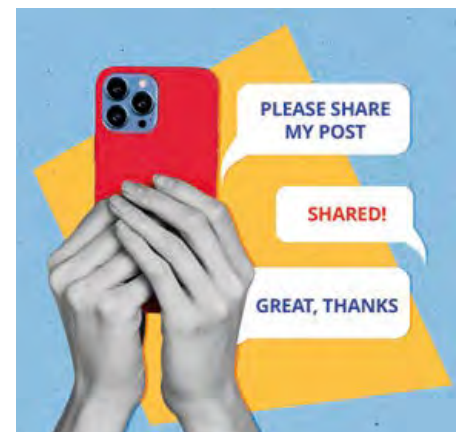
Cases over eligibility to Covid support are already starting to come before the Tax Tribunal, and they make useful reminders of the key points to check. One area where HMRC has picked up many errors is around eligibility in the first phase of the furlough scheme, when employees were not permitted to do any work at all for their employer.

This was the area where one small business, which ran parent and baby groups, children's events and after-school clubs, was held by the Tribunal to have fallen the wrong side of the rules. The company relied heavily on generating interest via social media posts: and the question was whether the fact that a director/employee posted on the business Facebook account while she was on furlough, meant she was 'working'. Because if it did, it made the furlough claim invalid. Although the Tribunal voiced

considerable sympathy for the business, it pointed out that its job is to look at the facts of a case, and apply the law to the facts involved. It has 'no jurisdiction to consider the fairness of the legislation or of HMRC's behaviour'.

In this case, though the number of social media posts fell off dramatically during the period in question, the Tribunal held to the letter of the rules. And in its own words, the rules were 'all or nothing... An employee who was turning out 100 widgets a day would still be working if they only turned out three widgets a day.' The verdict was in HMRC's favour and meant that the business had to repay furlough monies of nearly £9,500.

The case is a reminder of the complexity of the furlough rules, and the possibility of quite unintentional error.



- Inside this issue**
- R&D single scheme uncertainty for companies
 - HMRC detective work means tax bill for eBay trader
 - Paying voluntary National Insurance contributions
 - Child Benefit - watch the sting in the tail
 - GDPR right of access: new guidance
 - What is extended producer responsibility for packaging?

R&D SINGLE SCHEME UNCERTAINTY FOR COMPANIES

The government has now consulted on replacing the two existing Research and Development (R&D) schemes for tax relief with a single merged scheme. The result: uncertainty.

In its own words: 'The government has not yet taken a decision on whether to merge and intends to keep open the option of doing so from 2024. A decision on whether to merge will be made at the next fiscal event.'

Flashing amber

Though the government hasn't yet given the green light, there's a lot of activity to suggest it's at least on flashing amber. Draft legislation has been published and details of how the merged scheme might work are being consulted on.

It's a challenging outcome for companies involved in R&D, because change, if it comes, could come soon. The aim is to replace the existing Research and Development Expenditure Credit (RDEC) and the small and medium-sized enterprise (SME) relief; and the new rules could apply for expenditure incurred on or after 1 April 2024. As many of those who replied to the recent government consultation pointed out, this is a very ambitious timeline.

What is likely to come next?

The merged scheme is set, broadly, to operate along the lines of the RDEC, rather than the existing SME scheme. The headline rate of tax relief is expected to be 20%, with relief given via an expenditure credit, based on a percentage of R&D costs, offset against the company's tax liability. But there are variations from the current RDEC rules, notably as regards costs for subcontracted R&D work. These are subject to considerable restrictions with RDEC, but it's anticipated that the new merged scheme will generally allow claims for such costs.

The draft legislation uses the more generous version of the PAYE/NICs payable credit cap which is included in the existing SME scheme. A restriction on some overseas expenditure, mostly ruling out relief for outsourced overseas R&D costs, has already been announced, and was originally intended to take effect from 1 April 2023. It now takes effect from 1 April 2024 and will also apply under the new merged scheme. Two other changes being kept under review are the introduction of a minimum expenditure threshold, and reform to the rules on qualifying indirect activities.

Not quite a single scheme

The provisions for additional relief for R&D-intensive loss-making SMEs (companies where qualifying R&D spending is 40% or more of total expenditure), which have applied for expenditure incurred on or after 1 April 2023, look set to stay. These rules will continue to sit alongside the merged scheme.

Be prepared

R&D is fairly fizzing with change at the moment. The past year has already seen major changes to the rules around claims procedure, which are only just starting to bed in. HMRC's latest Annual Report and Accounts continues to flag up concerns about 'unacceptable' levels of error and fraud – particularly in the SME scheme, suggesting there is likely to be little let up in its increased compliance activity. Now, with the proposed merged scheme, it looks like off with the old, and on with the new – all over again. Rarely has it been more important to be on top of the R&D rules.

We should be only too pleased to help you review R&D claims and procedures, and take stock of the impact that the latest proposals might have on your business.

HMRC detective work means tax bill for eBay trader

Online sales: one of those areas where awareness of tax is often low.

On the one hand, someone with a day job and a sideline on eBay, who didn't think he had any trading income. On the other hand, a bill for over £28,000 from HMRC. This was the dispute that recently came before the Tax Tribunal.

The taxpayer in question worked as a security officer. He hadn't told HMRC he was trading and claimed that he was being harassed by the tax authority. His case rested on the argument that his eBay and PayPal accounts had been repeatedly hacked, and that many of the PayPal transactions under investigation were personal transactions, not trading transactions. HMRC looked at his various eBay names and his presence on another trading platform, noted what he offered for sale, and totted up 793 feedback entries in one twelve-month period alone. It investigated his

bank account, which showed payments from Amazon and PayPal, and payments to delivery companies, like Parcel Monkey; and it drew its own conclusions.

The Tribunal did not accept the taxpayer's version of events. 'The explanations . . . are not credible given the volume of transactions, the period over which they are recorded and the transfers involving his Barclays account.' In fact, it considered that HMRC's treatment was bordering on the generous. HMRC's reading of the case won the day: online sales were held to amount to trading.

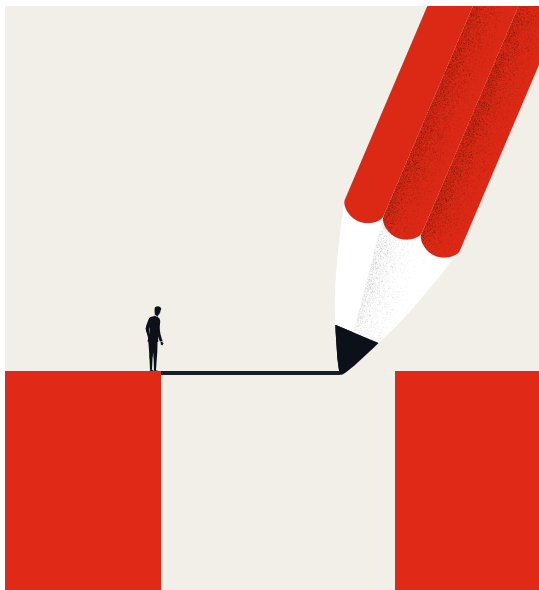
The case shows HMRC's capability when it comes to trawling data in pursuit of transactions it thinks are taxable. With new rules set to apply from 1 January 2024, giving the tax authority greater access to information on the income of those using digital platforms to sell goods and services, HMRC looks set to turn digital detective more often.



Paying voluntary National Insurance contributions

It's all about plugging holes in your National Insurance record. And that in turn, is about making sure there are enough years of National Insurance contributions (NICs), or National Insurance credits, to get the full State Pension.

Gaps in the contributions record can occur for all sorts of reasons. They can happen, for example, if you are self-employed, but have not paid contributions because of small profits; or are employed with low earnings; are unemployed and didn't claim benefits; or have been living or working outside the UK.



It is possible to make voluntary contributions to fill in gaps in the record, though time limits and eligibility requirements apply. Usually, you can only pay for gaps in the National Insurance record for the past six years. But as part of the transitional arrangements introduced alongside the new State Pension, there is a more generous deadline, applying for certain specific tax years.

For the tax years from April 2006 to April 2017, the deadline for contributions is 5 April 2025. This is a further extension: the government's original intention had been to allow contributions only until 31 July 2023. The provision particularly impacts men born after 5 April 1951, or women born after 5 April 1953, for whom retirement planning will be on the horizon. The new deadline gives them more time to decide whether voluntary contributions will be of benefit, and allow them to access State Pension entitlements. But it could also benefit anyone looking to make good a gap in the contributions record for the past six years.

Voluntary contributions don't always increase the State Pension, so it's important to check the position before making a decision. You can find out how to check your NI record, get a State Pension forecast, decide if making a voluntary contribution is worthwhile, and make a payment on gov.uk. You can also check your NI record through your Personal Tax Account.

Child Benefit - watch the sting in the tail

If you or your partner get Child Benefit, keep the High Income Child Benefit charge (HICBC) in mind.

High income for these purposes is lower than you might think. The charge applies if you, or your partner, individually have income more than £50,000, and

- you or your partner get Child Benefit, or
- someone else gets Child Benefit for a child living with you, and they contribute at least an equal amount towards the child's upkeep.

The charge applies regardless of whether the child living with you is your child, or not. Note, too, that for the HICBC, partner doesn't just mean spouse or civil partner, but includes someone you live with as if you were married.

The threshold to watch is what's called 'adjusted net income'. This is taxable income after deducting Gift Aid payments and pension contributions, but including interest from savings and dividends. If both you, and your partner, have income over the £50,000 threshold, the one with the higher income is responsible for paying HICBC.

The HICBC claws back Child Benefit at a rate of 1% for every £100 of income between £50,000 and £60,000. By the time income reaches £60,000, all Child Benefit payment is effectively lost. You can disclaim the actual Child Benefit payments, so you don't pay the charge.

The danger zone

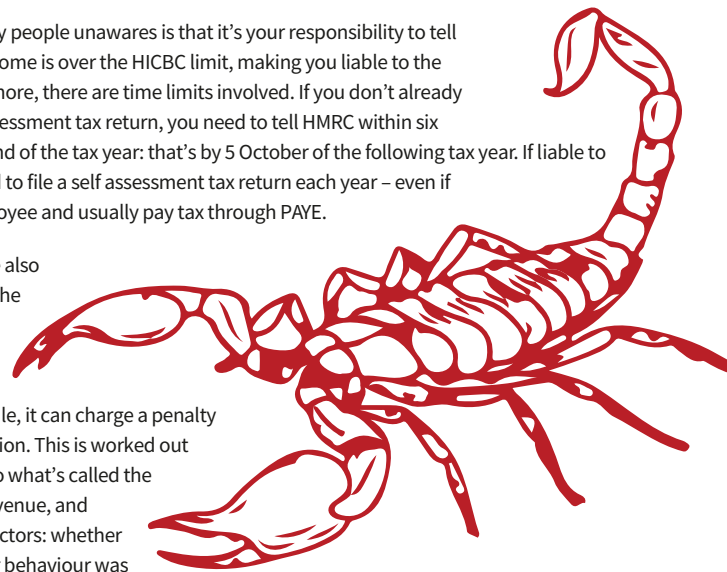
What takes many people unawares is that it's your responsibility to tell HMRC if your income is over the HICBC limit, making you liable to the charge. What's more, there are time limits involved. If you don't already submit a self assessment tax return, you need to tell HMRC within six months of the end of the tax year: that's by 5 October of the following tax year. If liable to HICBC, you need to file a self assessment tax return each year - even if you are an employee and usually pay tax through PAYE.

Many people are also taken aback by the fact that if you don't tell HMRC within the relevant timescale, it can charge a penalty for non-notification. This is worked out with reference to what's called the potential lost revenue, and hinges on two factors: whether it considers your behaviour was deliberate or not; and whether it gets the information because it has 'prompted' you, or you provided it voluntarily.

Where couples keep their financial affairs separate, the stakes can increase. It's not unusual to find that someone is faced with a demand for HICBC for a run of years, plus failure to notify penalties, when they weren't even aware that their partner was claiming Child Benefit. This happened to taxpayer, Mr Ashe, who got a 'nudge' letter from HMRC, telling him to check whether he ought to pay the charge - eight years after he had started living with his partner. He simply hadn't known that his partner claimed for her two children. In Mr Ashe's case, HMRC raised an assessment for more than £4,000 for HICBC, and just over £300 in penalties. Fortunately, on this occasion, all the penalties were ultimately cancelled.

Working with you

The HICBC is set to impact more couples than ever before, as wages rise with inflation, while the HICBC income limit remains fixed.



GDPR right of access: new guidance

Under the General Data Protection Regulation (GDPR), individuals have the right to a copy of the personal data that your organisation holds about them. This is often known as a subject access request (SAR). The Information Commissioner's Office (ICO) has recently issued new guidance for businesses and employers about how SARs should be dealt with.

The law

Employers must respond to a SAR from a worker without delay, and within one month from receiving the request. If it's a complex issue, you might be able to extend this for up to two months. But if you don't respond within the right timeframe, or at all, there's the possibility of fines or reprimand from the ICO.

In the ICO's own words: 'The right of individuals to access information that organisations hold on them is one that is vital for transparency and is enshrined in law. What we're seeing now is that many employers are misunderstanding the nature of subject access requests, or underestimating the importance of responding to requests.'

Getting it right

In practice, though, what does compliance look like? It might sound straightforward, but reality doesn't always fit text-book scenarios.

To help your staff recognise a request, they need to know that SARs can be made in all sorts of ways: there's no formal procedure needed. Contact can be verbal, in writing – even via social media. Questions as simple as 'what information do you hold on me?' or 'can I have a copy of the notes from my last appraisal?' count as SARs and need an appropriate response. There's no necessity even to use the words 'subject access request' – it's up to your organisation to identify that this is what is being made.

It's important, too, that staff know how to respond and who to pass the request to. A valid request can be made by means of contact with any part of your organisation: it doesn't have to be addressed to a specific person. But the employer's side of the equation is different, and the ICO does expect you to have a designated person, team and email address to deal with SARs.

With more than 15,000 complaints in this area made to the ICO last year, it's important that businesses and employers get it right. Further details can be found on the ICO website.

What is extended producer responsibility for packaging?

As part of the government's pledge to eliminate avoidable waste, and recycle a greater proportion of municipal waste, the rules on recycling responsibilities are changing. Extended producer responsibility for packaging (EPR) is part of this.



EPR aims to make manufacturers and importers more responsible for the environmental impact of their products. There are a range of reporting requirements, as well as fees that push the cost of recycling packaging onto organisations in the UK that import or supply packaging. The rules have wide reach, impacting materials that the Plastic Packaging Tax, for instance, doesn't.

Organisations affected by EPR must report packaging data, beginning from this year, 2023. In due course, EPR for packaging fees will apply. These were due to start in October 2024, but have now been delayed

until October 2025. Any fees due under previous regulations continue to apply in the interim. The new EPR fees will vary depending on the materials reported, and at present there is no further detail. The waste management fee will vary depending on how easily packaging can be recycled.

Who is affected?

EPR applies to all UK organisations importing or supplying packaging that:

- are businesses, subsidiaries or groups (not charities)
- have annual turnover of £1 million or more, based on the most recent annual
- accounts were responsible for more than 25 tonnes of packaging in 2022, and
- carry out any of the packaging activities.

'Carrying out packaging activities' is widely defined, and includes supplying empty packaging; and hiring out or loaning reusable packaging, such as wooden pallets for transporting goods.

What you need to do

The rules mean your organisation may need to:

- collect and report data on the packaging you supply or import
- pay a waste management fee
- pay scheme administrator costs
- pay a charge to the environmental regulator
- get packaging waste recycling notes or packaging waste export recycling notes
- report information about which nation in the UK packaging is supplied in and discarded in (nation data).

The exact responsibilities vary depending on the size of the organisation (defined according to specific rules), how much packaging is supplied, and which nation of the UK is involved. You can find out more and check your obligations on gov.uk.

Please contact Ellacotts if you wish to discuss any of the articles in this newsletter or if you have a query please **contact your usual contact at Ellacotts**.

Ellacotts is the trading name of Ellacotts LLP, which is a limited liability partnership registered in England and Wales, number OC319580. The registered office is 23 West Bar, Banbury, OX16 9SA where a list of members is available for inspection. Ellacotts LLP is regulated for a range of investment business activities by the Institute of Chartered Accountants in England and Wales.

Ellacotts Audit Services Limited is registered to carry on audit work in the UK by the Institute of Chartered Accountants in England and Wales. Registered as a limited company in England and Wales, number 12572280, the registered office is 23 West Bar, Banbury, Oxfordshire OX16 9SA. Details about our audit registration can be viewed at www.auditregister.org.uk under the reference number C008320871.

Disclaimer - for information of users: This newsletter is published for the information of clients. It provides only an overview of the regulations in force at the date of publication and no action should be taken without consulting the detailed legislation or seeking professional advice. Therefore no responsibility for loss occasioned by any person acting or refraining from action as a result of the material contained in this newsletter can be accepted by the authors or the firm.